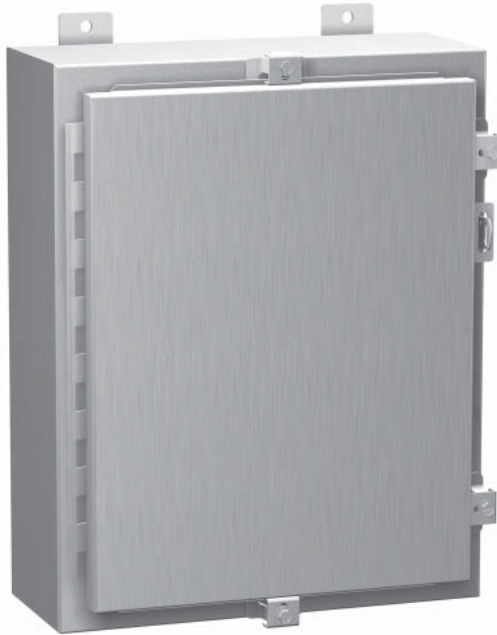


1418 Series Single Door Aluminum Enclosures - NEMA 4

Continuous Hinge, Clamped Cover



Inner
Panel
Included



Corrosion Resistant

Wallmount Enclosures

Application

- Designed for use as instrument enclosures, electric, hydraulic or pneumatic control housings, electrical junction boxes or terminal wiring enclosures.
- Provides protection where equipment may be hosed down or otherwise be very wet, or in specific applications where corrosion may be a problem.

Standards

- UL 508 Type 4 and 12 as marked¹
- CSA Type 4 and 12
- **Complies with**
 - NEMA Type 4, 12 and 13
 - JIC EGP-1-1967
 - IEC 60529, IP66

Construction

- Formed from 0.10" Type 5052 H-32 aluminum.
- Smooth, continuously welded seams without knockouts, cutouts or holes.
- Door and body stiffeners are provided in the larger enclosures for extra rigidity.
- Welded brackets provide for enclosure mounting.
- Formed lip on door and enclosure excludes flowing liquids and contaminants.
- Aluminum continuous hinge on door may be removed by pulling the aluminum hinge pin.
- Door is secured with easily operated aluminum clamps.
- Provision for padlocking.
- Seamless poured-in place gasket.
- A removable 12 gauge inner panel is included.
- Collar studs are provided for mounting inner panels.
- A bonding stud is provided on the door and a grounding stud is provided in the enclosure.
- A literature pocket is provided for the inside of the door.

Finish

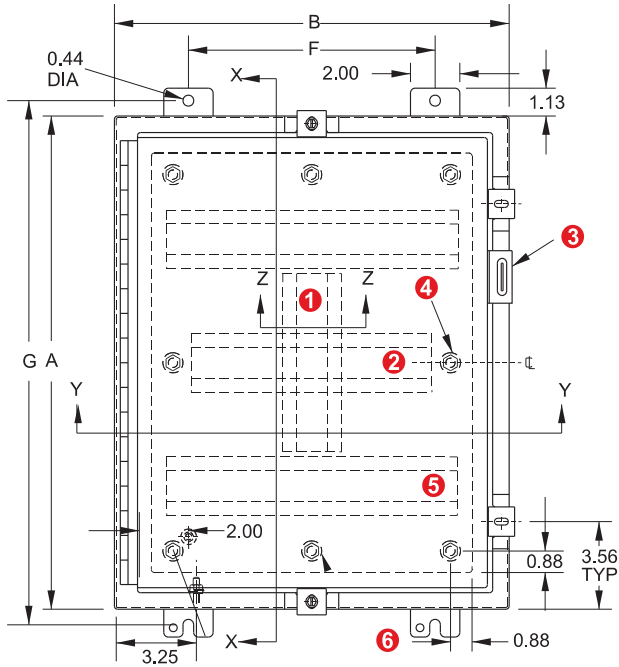
- Cover and enclosure are natural unfinished aluminum.
- Removable inner panel is finished in white powder coating.

Accessories

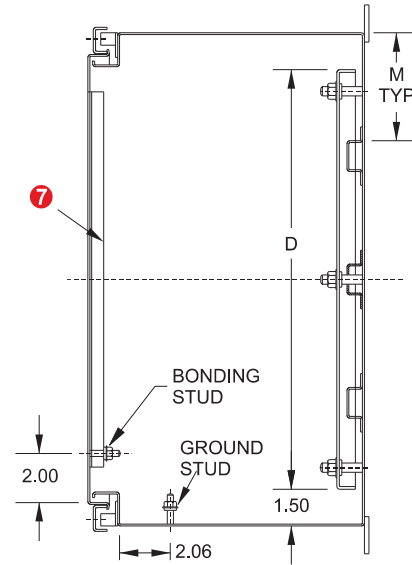
- Additional inner panels...see page **436**
- Breather kits...see page **400-401**
- Door stop kits...see page **453**
- Heaters...see page **393-396**
- Lock kit...see page **431**
- Terminal kit assemblies
...see page **441**
- Thermostats...see page **397**
- Window kits...see page **449**

1418 Series Single Door Aluminum Enclosures - NEMA 4

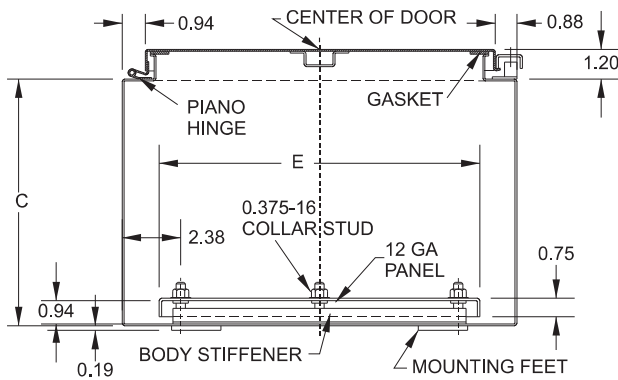
Continuous Hinge, Clamped Cover



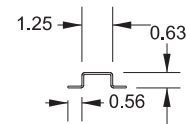
Front View



Side View



Section Y-Y



Section Z-Z

- ① Vertical stiffener required on KK and M only.
- ② Omit center body stiffener if A is less than 41".
- ③ Padlocking hasp and staple.
- ④ Omit 2 middle studs if A is less than 31".
- ⑤ Omit body stiffeners if A or B is less than 29".
- ⑥ Omit 2 middle studs if B is less than 31".
- ⑦ Omit door stiffener if A or B is less than 31".

Part No.	Panel Size			Mtg. Centers		Ship Wt. lbs.
	A	B	C	D	E	
1418N4ALB6 ^{1,2}	16	12	6	13	9	14
1418N4ALC6 ^{1,2}	20	16	6	17	13	16
1418N4ALE6 ¹	24	20	6	21	17	21
1418N4ALJ8 ¹	24	24	8	21	21	26
1418N4ALK8 ¹	30	24	8	27	21	39
1418N4ALM8	36	30	8	33	27	42
1418N4ALS8	48	36	8	45	33	56
1418N4ALC10 ^{1,2}	20	16	10	17	13	19
1418N4ALE10 ¹	24	20	10	21	17	24
1418N4ALK12 ¹	30	24	12	27	21	36
1418N4ALM12	36	30	12	33	27	47
1418N4ALT12	60	36	12	57	33	83

When A=	M=
30	7.00
36	9.00
42	9.88
48	11.38
60	14.38

¹ Meets UL standards

² Flat panel

Technical references and CAD downloads available at www.hammondmfg.com

All dimensions in inches unless specified otherwise

Quality Products. Service Excellence.